

# Evaluating Diseases on Nebraska's Major Cultivars

*Paul Read  
Stephen Gamet  
University of Nebraska  
Viticulture Program*



<http://agronomy.unl.edu/viticulture>



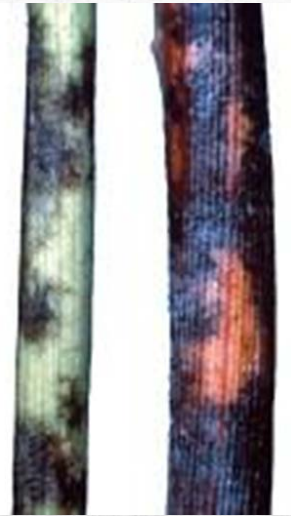
<b>Disease</b>	<b>Leaves</b>	<b>Canes</b>	<b>Berries</b>
<b>Powdery Mildew</b>	<b>X</b>	<b>X</b>	<b>X</b>
<b>Downy Mildew</b>	<b>X</b>	<b>X</b>	<b>X</b>
<b>Black Rot</b>	<b>X</b>		<b>X</b>
<b>Phomopsis Cane and Leaf Spot</b>	<b>X</b>	<b>X</b>	<b>x</b>
<b>Anthracnose</b>	<b>X</b>	<b>X</b>	<b>X</b>
<b>Botrytis Bunch Rot</b>			<b>X</b>
<b>Bitter and Other Bunch Rots</b>			<b>X</b>

# Grape Diseases

---



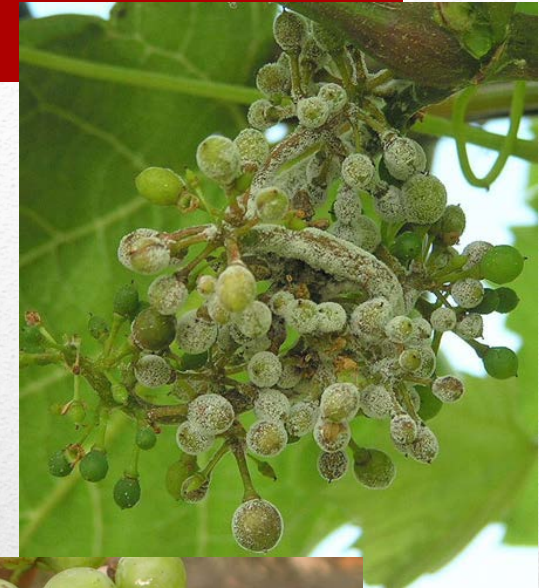
Favored by High Humidity



# Powdery Mildew



Favored by Wet Conditions



# Downy Mildew



Favored by Wet Conditions



# Black Rot



Favored by Wet Conditions



# Phomopsis



Favored by Wet Conditions



# Anthracnose



Favored by Wet Conditions



# Botrytis Bunch Rot

---





Favored by Wet Conditions and Insect Feeding



# Bitter Rots



Stage	Anthraco	Phomopsis	Black Rot	Downy Mildew	Powdery Mildew	Botrytis Bunch Rot
Dormant	X					
Bud Break > Bloom	x	X	X	X	X	
Bloom	x	X	X	X	x	X
Shatter	x		X	X	X	
1 <sup>st</sup> Cover > Véraison	x		X	X	X	Berry Touch
Véraison > Harvest				X	Leaves, Shoots	Véraison
Post Harvest				?	?	

# Disease Control Period



White	Black Rot	Downy Mildew	Powdery Mildew	Botrytis	Phomopsis Cane and Leaf Spot	Crown Gall	Anthracoese
Brianna	2	1	1	2	?	3	?
Chardonel	2	2	3	2	3	2	1 to 2
Edelweiss	1	1	2	2	?	1	2
La Crescent	2	3	2	1	1	1	1 to 3
Lacrosse	3	1 to 2	2	3	2	?	1
Prairie Star	2	1	1	1	?	?	2
Seyval blanc	3	2	3	3	2	2 to 3	2
St. Pepin	1	1	3	2	?	?	1
Traminette	1 to 2	1 to 2	2	1 to 2	3	2	1
Vignoles	1	2	3	3	2	2 to 3	3

1 = tolerant; 2 = intermediate; 3 = very susceptible

# Relative Cultivar Susceptibility



<b>Red</b>	<b>Black Rot</b>	<b>Downy Mildew</b>	<b>Powdery Mildew</b>	<b>Botrytis</b>	<b>Phomopsis Cane and Leaf Spot</b>	<b>Crown Gall</b>	<b>Anthracoese</b>
<b>Chambourcin</b>	3	2	1	2	?	2to 3	1
<b>Chancellor</b>	1	3	3	1	3	2 to 3	2
<b>Cynthiana (Norton)</b>	1	2	2	1	1	1	1
<b>DeChaunac</b>	1	2	2 to 3	1	2 to 3	2	2
<b>Frontenac</b>	2	1	2	1 to 2	1	?	1
<b>Leon Millot</b>	1	1 to 2	2	3	1	1 to 2	1
<b>Maréchal Foch</b>	2	1	2	1	?	1 to 2	2
<b>Marquette</b>	1	1	1	1	?	?	?
<b>St. Croix</b>	1	2	2	2	?	?	?
<b>St. Vincent</b>	2	2	2	2	1	1	?

1 = tolerant; 2 = intermediate; 3 = very susceptible

# Relative Cultivar Susceptibility

